

# Model ECSS 20

3" - 14 gauge spun aluminum ball  
gold anodized.

Single sheave truck, cast aluminum  
stationary, non-fouling type ST-1-16

One set of halyard,  
#8 polypropylene

2 Nylon flag snaps

One 9" Cast Aluminum Cleat

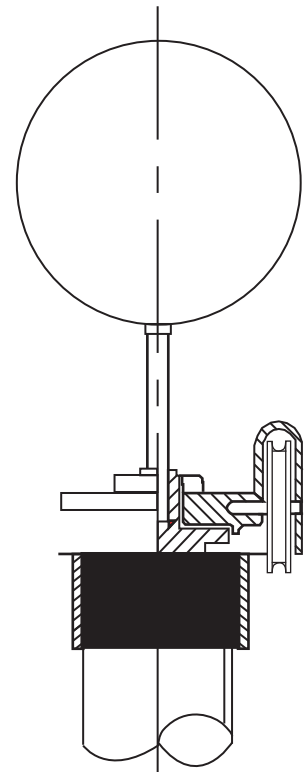
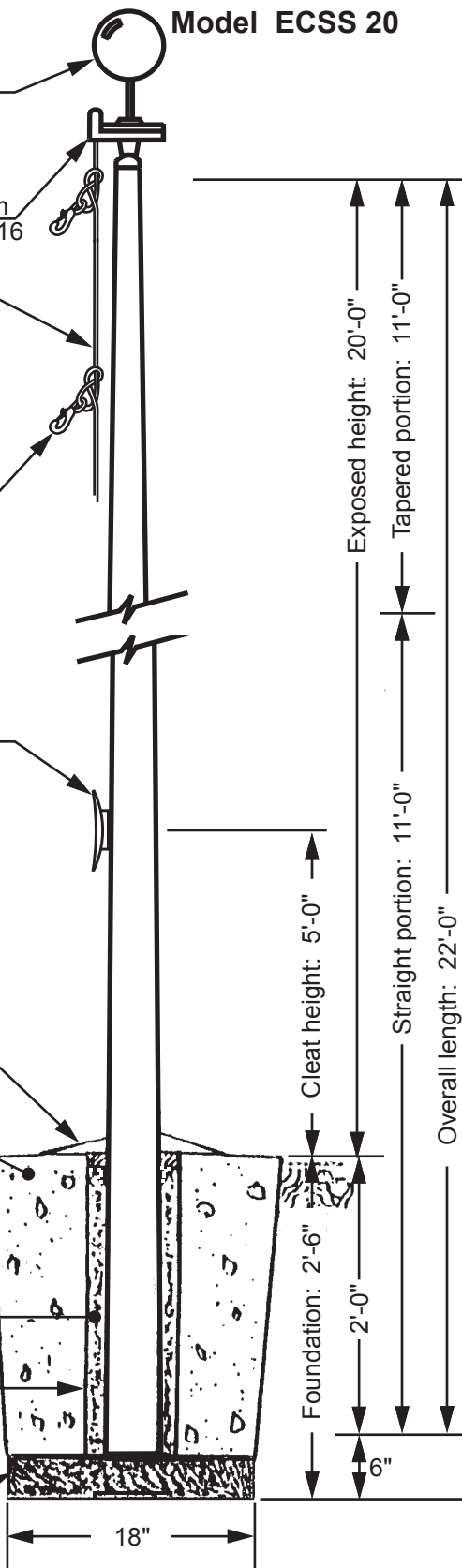
Aluminum flash collar (Optional)

3000 PSI concrete

Dry sand tightly tamped  
after aligning pole

Plastic PVC Sono tube 24"

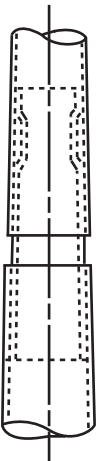
Crushed Stone



All shafts with overall length of more than 38'-6" are shipped in two sections.

Each section matched marked for field assembly. Exposed portion of jam sleeve must be **well lubricated** prior to assembly.

1-1/2" maximum shop gap allowed for field fitting (ram for tight joint)



Project:	Ground set tapered aluminum flagpole: ALLOY: 6063T6	FLAGS.COM	Date:
Location:	Exposed height: 20'-0"	Overall height: 22'-0"	1-800-858-8776
Architect:	Ship in 1 section	Butt diameter: 3"	1395 NW 17th Ave #112B
Contractor:	Top diameter: 1-7/8"	Wall thickness: .125"	Delray Beach, FL 33445
Customer:	Finish: 100 grit polish		Job: